

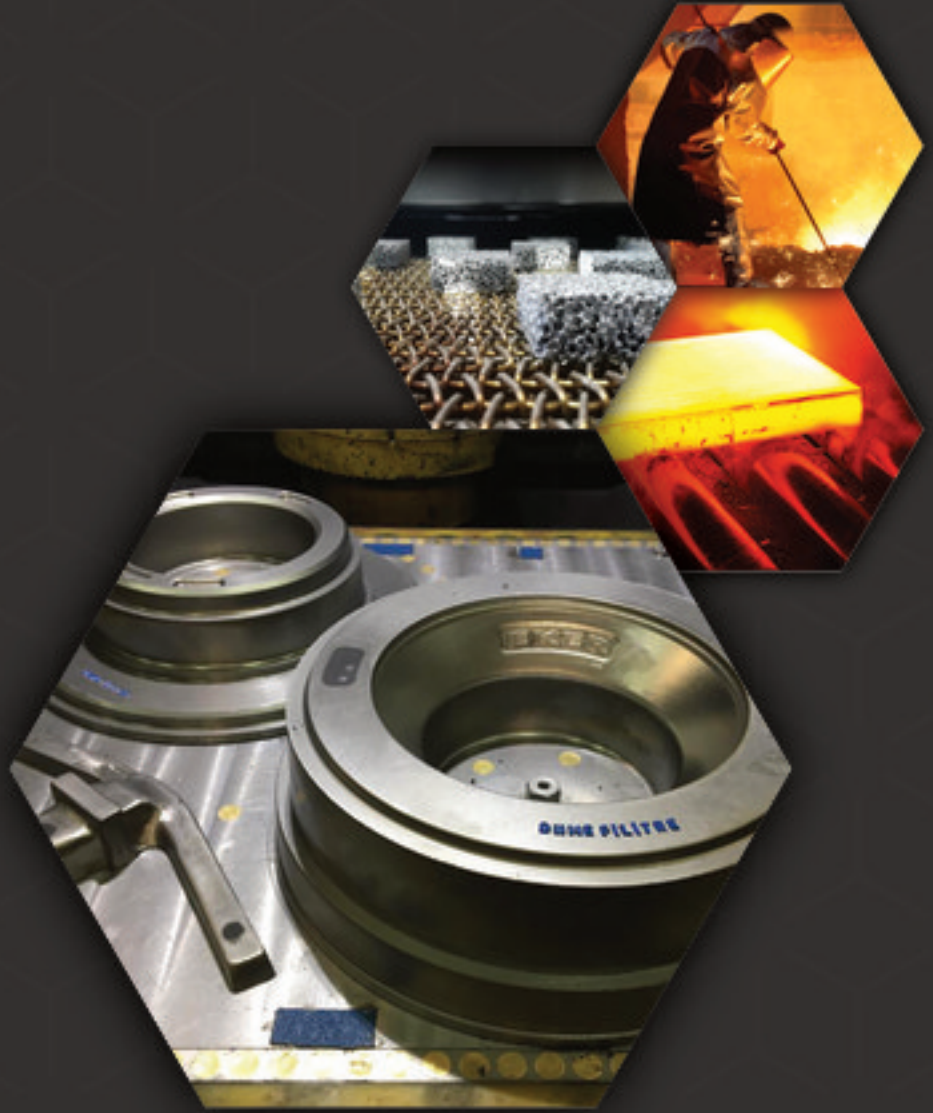
**GISSMANN**<sup>™</sup>  
KİMYA FİLTRE SAN.TİC.LTD.ŞTİ.

## About us

**Giessmann Kimya Filtre San. Tic. Ltd. Sti.** is a manufacturer of foam ceramic filters for the foundry industry.

Founded in 2010, the company is headquartered in Turkey (Isparta Province, approximately 150 km north of Antalya).

Get a quick overview of our company and our products.



Our aim is to be a reliable partner in the supply chain for foundries and wholesalers for foundry supplies and to jointly and economically meet the requirements for consistent quality, delivery reliability and procurement logistics, in a global market.

The foundation of the company has its origin in Germany.

Our managers trained in Germany, have learnt their product and management knowledge in German industry and have built up practical know-how over decades.

In 2010, we decided to choose Turkey as our production location. The demand for foundry products in Turkey has increased significantly in recent years and continues to expand. Turkey and other countries east of Europe (EU) are increasingly establishing themselves as production locations for foundry products.

In addition to the geographical aspect, the economic conditions favour the cost structure of our products, which ultimately benefits in particular our valued customers in the European Union.



Isparta is the capital of the Turkish province of the same name, Isparta, home to a population of 250,000. The Süleyman Demirel University in Isparta has faculties of engineering and technology, which enables us to meet our existing and future requirements for specialist and auxiliary personnel.

Isparta is conveniently located with regard to transport as it has an airport and as Antalya, which is heavily frequented by international flights, is only 150 km away.

## About us



### **Elyasa Süme**

As an investor, Mr Süme played a major role in setting up the production facility in Isparta and is happy to serve our Turkish customers as a competent and problem-solving key account manager. He brings his leadership qualities, which he acquired during his professional football career, most recently as team captain of the Turkish first division club Gaziantepspor, successfully to his "second career" as sales manager.



### **Ahmet Turan Boztepe**

Mr Boztepe heads our administration, accounting and controlling. Together with his team, he ensures that all processes work together like clockwork and that promises are kept.



### **Daniel Kempkes**

Managing Partner of Ecultor GmbH & Co. KG

Mr Kempkes represents Giessmann Kimya Filtre San. Tic. Ltd. Sti. as commercial agent for the European Economic Area (EU). He completed his training as an industrial clerk and worked for more than 10 years in a key position as an employee for a plastics processing company on solutions and products for established retail chains in Germany and the Netherlands, where he was responsible for the commercial processes. In 2006, he became self-employed and today he operates one of the world's most efficient production facilities for the manufacture of display protection films. His products are used in a wide range of industrial applications.



# Ceramic casting filters in silicon carbide (SiC)

Silicon carbide filter for use in the casting of iron and copper alloys

Dimensions		Area	Flow capacity kg/cm <sup>2</sup>			Packaging unit	
[mm]	[cm <sup>2</sup> ]	***GJL, GJM max. 4kg/cm <sup>2</sup>	**GJS, GJV max. 2kg/cm <sup>2</sup>	*NiResist, SiMo, GJS (Inmold) max. 1kg/cm <sup>2</sup>	Pieces per carton	Pieces per pallet (20 cartons)	
<b>Rectangular filters</b>		<b>height 15 mm</b>					
35 x 35 x 15	12,25	49	25	12	1440	28.800	
40 x 40 x 15	16,00	64	32	16	1155	23.100	
50 x 50 x 15	25,00	100	50	25	810	16.200	
50 x 100 x 15	50,00	200	100	50	450	9.000	
55 x 55 x 15	30,25	121	60	30	600	12.000	
60 x 60 x 15	36,00	144	72	36	600	12.000	
75 x 75 x 15	56,25	225	113	26	360	7.200	
75 x 100 x 15	75,00	300	150	75	300	6.000	
		<b>height 22 mm</b>					
35 x 35 x 22	12,25	49	25	12	1056	21.120	
35 x 50 x 22	17,50	70	35	17	792	15.840	
40 x 40 x 22	16,00	64	32	16	847	16.940	
50 x 50 x 22	25,00	100	50	25	594	11.880	
50 x 75 x 22	37,50	150	75	37	396	7.920	
50 x 100 x 22	50,00	200	100	50	330	6.600	
55 x 55 x 22	30,25	121	60	30	440	8.800	
60 x 60 x 22	36,00	144	72	36	440	8.800	
75 x 75 x 22	56,25	225	113	56	264	5.280	
75 x 100 x 22	75,00	300	150	75	220	4.400	
100 x 100 x 22	100,00	400	200	100	165	3.300	
100 x 125 x 22	125,00	500	250	125	132	2.640	
100 x 150 x 22	150,00	600	300	150	99	1.980	
125 x 125 x 22	156,25	625	312	156	88	1.760	
		<b>height 30 mm</b>					
150 x 150 x 30	225,00	900	450	225	54	1.080	
175 x 175 x 30	306,25	1225	612	306	18	360	
200 x 200 x 30	400,00	1600	800	400	18	360	
		<b>height 35 mm</b>					
175 x 175 x 35	306,25	1225	612	306	12	240	
200 x 200 x 35	400,00	1600	800	400	12	240	
<b>Round filters</b>		<b>height 15 mm</b>					
Ø 40 x 15	12,56	50	25	12	1155	23.100	
Ø 50 x 15	19,63	78	39	19	810	16.200	
Ø 60 x 15	28,26	113	56	28	600	12.000	
		<b>height 22 mm</b>					
Ø 40 x 22	12,56	50	25	12	847	16.940	
Ø 50 x 22	19,63	78	39	19	594	11.880	
Ø 60 x 22	28,26	113	56	28	440	8.800	
Ø 70 x 22	38,47	154	77	38	308	6.160	
Ø 80 x 22	50,24	201	100	50	264	5.280	
Ø 90 x 22	63,59	254	127	63	165	3.300	
Ø 100 x 22	78,50	314	157	78	165	3.300	
Ø 125 x 22	122,66	491	245	122	88	1.760	
		<b>height 30 mm</b>					
Ø 150 x 30	176,63	706	352	176	48	960	
Ø 175 x 30	240,00	960	480	240	16	320	
Ø 200 x 30	314,00	1256	628	312	16	320	
		<b>height 35 mm</b>					
Ø 175 x 35	240,00	960	480	240	12	240	
Ø 200 x 35	314,00	1256	628	312	12	240	

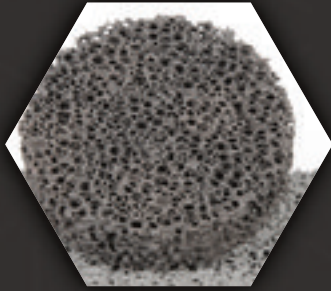
The flow capacities are dependent on many internal customer process parameters and can therefore only be seen as recommended values. The listed filter sizes are standard formats. Special formats can be manufactured according to customer specifications.

\*\*\*GJL = cast iron with lamellar graphite, GJM = malleable cast iron

\*\*GJS = cast iron with spheroidal graphite, GJV = cast iron with vermicular graphite

\*NiResist = austenitic cast iron, SiMo = alloyed ferritic spheroidal cast iron

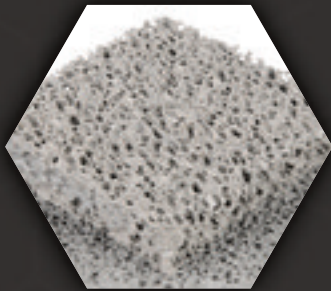
# Products



## Ceramic casting filters in foam structure

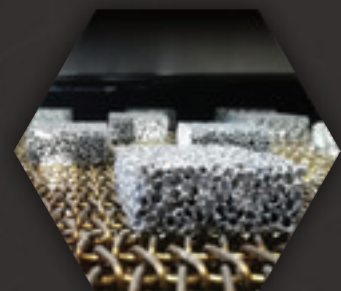
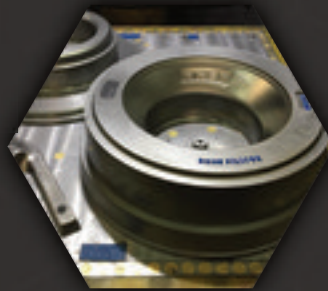
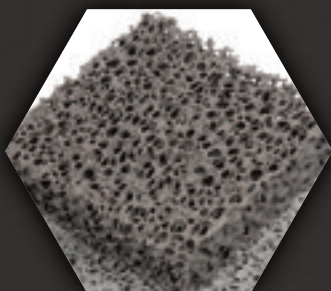
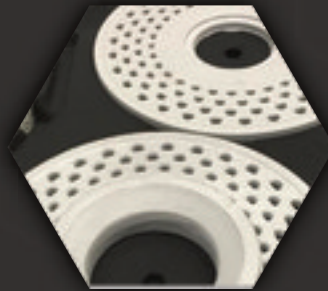
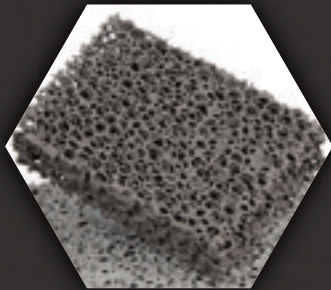
Over the last 30 years, the casting filter has firmly established itself as an auxiliary material for the production of cast parts and is an indispensable part of the modern, safe foundry process.

**Ceramic foam filters** are used to separate slag and other impurities in the casting system and to calm the flow. Depending on the casting material, different filter materials and filter porosities are used.



The production focus, the ceramic casting filter manufactured by Giessmann, is based on **silicon carbide** (SiC for short) and ensures maximum filter efficiency and flow stabilisation.

Giessmann SiC casting filters are available in porosities of 10 PPI, 20 PPI, 30 PPI and 40 PPI and in various sizes.



Giessmann Kimya Filtre San. Tic. Ltd. Sti. works in accordance with **DIN ISO 9001** to ensure consistent quality at all times.

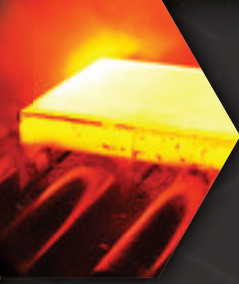
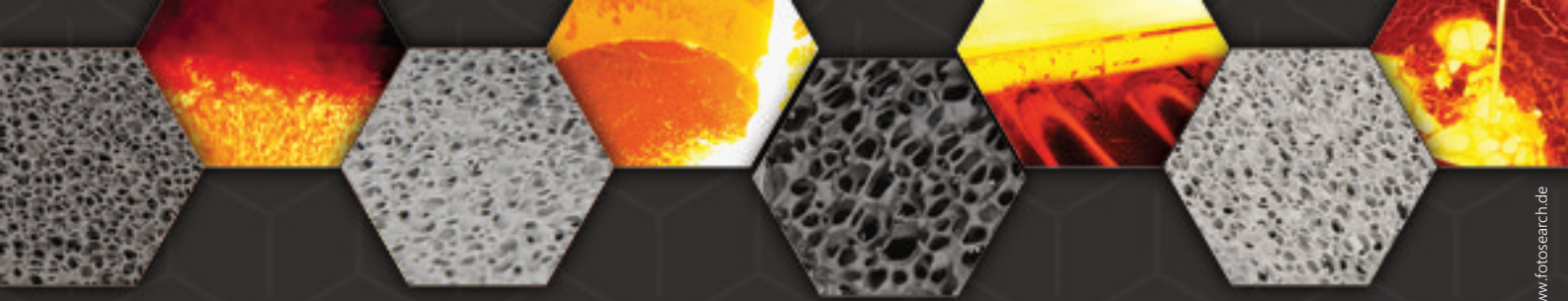
During production, all batches are extensively documented and controlled.

Our inspections are based on the P 100 guideline of the German Foundry Industry Association (Deutschen Gießerei-Industrie – BDG) "Ceramic filters in foam structure – ceramic foam filters for iron and steel castings".



### **The most important controls include:**

- **Nominal filter dimensions**
  - **Filter volume**
  - **Filter weight**
  - **Filter porosity**
- **Cold compressive strength**
  - **Loose filter fragments**
- **Temperature shock resistance at casting temperatures (impingement test)**



**GISSMANN**  
KİMYA FİLTRE SAN.TİC.LTD.ŞTİ.

**GISSMANN KİMYA FİLTRE SAN. ve TİC. LTD. ŞTİ.**

Commercial agency for the European Union:  
Eculcor GmbH & Co. KG · Holtkamp 19 · 46414 Rhede (Westf.) · Germany  
Phone + 49 (0) 28 72 / 9 48 26 33 · E-Mail: filter@eculcor.de